



Pipeline Clamp

For Long Splits or Extensive Corrosion

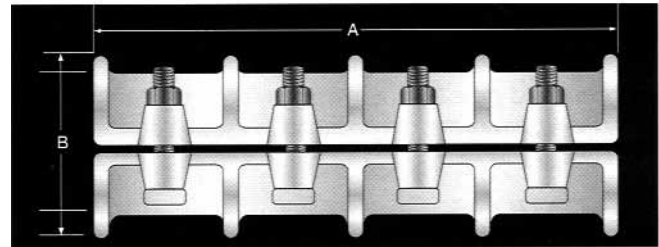
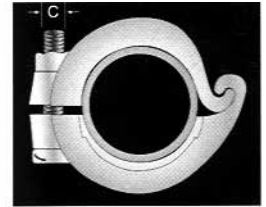


Model "PL"

There is nothing like the SkinnerSeal Pipeline Clamp for long splits in pipe or extensive corrosion resulting in a series of pit holes. It has the same construction as the Emergency Pipe Clamp except it is double in length. The ample weight of this clamp gives a generous margin of safety for high pressure work.

With bolts on only one side and a hinge along the other, it can very quickly be installed under pressure, without interruption of service.

The Pipeline Clamp is made of ductile iron, heavily reinforced design throughout, equipped with a special crescent-shaped pressure-equalizing gasket for each individual pipe size and cemented in place. Gasket is BunaN.



Specifications

Size Pipe, IPS (inches)	3/4	1 1/4	1 1/2	2	3	4	6
Length "A" (inches)	7 1/2	8 1/2	9	10	11	12	14
Width "B" (inches)	2 1/8	2 3/4	3	3 5/8	5 1/4	6 1/4	8 1/2
Bolt Diameter "C" (inches)	5/16	3/8	3/8	7/16	1/2	1/2	5/8
Bolt Length "D" (inches)	2	2 1/2	2 1/2	2 3/4	3 1/2	3 1/2	5
Number of Bolts	4	4	4	4	4	4	4



Price Schedule

PIPELINE CLAMPS				BOLTS ONLY		
Size (inches)	Part Number	Sugg. List Price	Approx. Weight (lbs.)	Size (inches)	Part Number	Sugg. List Price
3/4	089875	\$ 52.00	3.75	5/16x2	080098	\$ 2.15
1 1/4	089873	\$ 93.00	4.75	3/8x2 1/2	080100	\$ 2.15
1 1/2	089872	\$ 115.00	6.5	3/8x2 1/2	080100	\$ 2.15
2	089871	\$ 132.00	9	7/16 x 2 3/4	080102	\$ 2.15
3	089869	\$ 150.00	15	1/2 x 3 1/2	080103	\$ 3.25
4	089868	\$ 179.00	17.5	1/2 x 3 1/2	080103	\$ 3.25
6	089866	\$ 330.00	31.5	5/8 x 5	080864	\$ 8.65

Installation Procedure

Pipeline Clamp

1. Thoroughly clean the damaged area of pipe with a wire brush. This will help insure a bubble tight gasket seal.
2. Place the Clamp around the pipe so that the leak is fully covered by the gasket.
3. Tighten the bolts evenly to the recommended torque (see table below).
4. Pressure test the completed installation for leaks.
5. Check for leaks before leaving.

Size (inches)	Torque	Working Pressure	Size (inches)	Torque	Working Pressure
3/4	10 ft. lbs.	600 psi	3	40 ft. lbs.	400 psi
1 1/4	18 ft. lbs.	500 psi	4	40 ft. lbs.	300 psi
1 1/2	18 ft. lbs.	500 psi	6	60 ft. lbs.	300 psi
2	25 ft. lbs.	500 psi			